

# KOTHEA

## KOTHEA Press Release

Contact(s):

**Mark Gee**

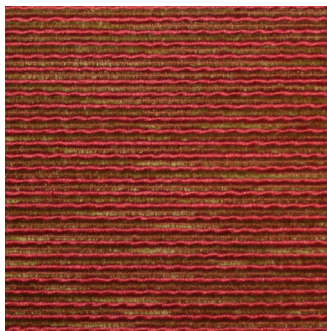
+44 (0)870 285 4768  
mgee@kothea.com

**Press**

[www.kothea.com/blog](http://www.kothea.com/blog)

## KOTHEA Release New Fabric For Interiors

**LONDON, England. 02-FEB-2009 09.00 AM:** KOTHEA today announced it has expanded its product range by the addition of KOCHENCAT, an upholstery, panelling and curtain fabric suitable for both contract and residential usage.



**KOCHENCAT**

Reference: 19-002-431

Colour Shown: **Red**

Total Colourways: **27**

Width: **140cm**

Martindale: **50,000 'rubs'**.

Usage: *Curtains. Upholstery. Panelling.*

Type of fabric: *Textured Weave.*

Composition: *49% Cotton. 31% Polyester.  
20% Chenille.*

RRP: *£90.00/metre*

## About KOTHEA.

KOTHEA are a top-market fabric house based in London serving customers throughout all of Europe and The Middle East. Founded in 1999 they have since continued to develop and sell an extensive range of timeless fabrics to the top architects, interior- and yacht-designers for projects ranging from mega-yachts to boutique hotels and from luxury spas to penthouses.

KOTHEA operate on a trade-only basis and their fabrics are available to the public through interior designers and specialist interior design shops such as Gotham, Interiors Bis and Fiona Campbell. KOTHEA also supply beautiful hand-woven linen fabrics and finished goods – throws and table linen.

# KOTHEA

KOTHEA's trade customers would perceive their signature fabrics to include several ranges of velvet such as the exclusive 'cashmere silk velvet', silks, linens, double-width sheers, faux leather and interesting weaves for upholstery often with high Martindale 'rub tests' making them highly suited to both contract and residential projects.

Founder and Executive Director, Lisa Parsons started KOTHEA more than 10 years ago after 11 highly successful years with Nobilis Fontan in Chelsea and Donghia in Chelsea Harbour. She says, *"At KOTHEA we like to think we bring something a little different to the market. Our difference will be reflected in our customers' eyes by unusual fabrics that complement our core fabric ranges; all augmented by our excellent levels of customers service, market knowledge and attention to detail."*

# # #

## **For Further Information**

Please visit the company web site at <http://www.kothea.com>

## **Trademarks**

KOTHEA is a registered trade mark of KOTHEA Limited. Other names may be trademarks of their respective owners.