

# KOTHEA

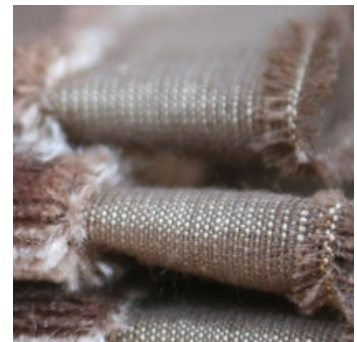
## Velvet Upholstery

## Designer's Worksheet

**Velvet upholstery** looks beautiful and is truly amazing. Velvet upholstery is often a core component of many design schemes – both contract and residential. Mohair Velvets can be durable; Silk Velvets are typically beautiful to the touch and to the eye.

But Interior Designers should consider the following. Many high quality velvets represent a considerable investment in a Silk Velvet or Mohair Velvet. If your upholsterer is asking for upholstery instructions then may we politely suggest that they may not have upholstered with a velvet before! Be sure that you are employing a competent person to cut your expensive fabric.

An experienced upholsterer, to be brutally honest, should not need the guidelines and instructions that follow.



KOTHEA Limited

**T: 0870 285 4768**

F: 0870 284 3153

**E: [info@kothea.com](mailto:info@kothea.com)**

W: [www.kothea.com](http://www.kothea.com)

# KOTHEA

Some velvets are woven with a nap others are not. It is not a problem either way. If there is a nap you need to know which way it goes as that affects the process of upholstering. When you run your hand down the Mohair Velvet or Silk Velvet the smoothed direction indicates the direction of the nap. **Remember this, it is important.**

I'm assuming that you have already checked that the fabric is not damaged and that each piece is from the same dye lot and that you have the right piece lengths.

The nap should be upholstered downwards for:

- the back;
- the seat; and
- side surfaces.

The nap should be upholstered from the outside inwards for:

- arm rests.

How do you flip your cushions? Top to bottom or left to right?

Most people flip from top to bottom. It is therefore standard upholstering practice to upholster the front and the back the opposite way. IE when they are flipped over the nap is the same.

You should use a layer of wadding between the foam and the fabric. The wadding can be either cotton or synthetic, it does not really matter, but check with any fire rating requirements. Again check that you are using the right kind of foam but HR foam or cold foam are both fine.

However if the pile is vertical then we advise the additional use of a cotton slip-cover.

Going back to the foam for a minute **we advise that you use white wadding**. In certain circumstances it is possible that grey wadding will 'bleed' causing marks on your beautiful Mohair Velvet. For example this may be caused from moisture used in the cleaning process.

Always use wadding on the arm rests as a protective layer to help eliminate 'sharp' edges. Using wadding on arm rests will thus reduce wear and tear considerably.

KOTHEA Limited

T: 0870 285 4768

F: 0870 284 3153

E: [info@kothea.com](mailto:info@kothea.com)

W: [www.kothea.com](http://www.kothea.com)

# KOTHEA

For the piping never use synthetic piping cord, **always use cotton piping cord**. Just like the arm rests, this will reduce wear and tear by eliminating the 'sharper edges'.

Again, to reduce wear and tear, use the length of the fabric to make the piping. This will look better as well!

## Resources:

Verity du Sautoy,

Marketing At KOTHEA - <http://www.kothea.com/>

Designers' Fabric Knowledgebase - <http://blog.kothea.com/>

Source: [Blog post from June 2010](#)

Related Design Resources: [Velvet cleaning, velvet handling, velvet upholstery, velvet curtains.](#)

Top market fabrics for the leading interior designers and architects. Exceptional quality, inspiring designs, extensive colourways. Core fabrics products for your design scheme: extended neutrals; striking designs; technical fabrics; professional support and guidance for fabric specification and treatment.

[Now, ask KOTHEA for samples.](#)

KOTHEA Limited

T: 0870 285 4768

F: 0870 284 3153

E: [info@kothea.com](mailto:info@kothea.com)

W: [www.kothea.com](http://www.kothea.com)