

# KOTHEA

## Cashmere Throws

## Designer's Worksheet

This document contains the following information about KOTHEA Luxury

Cashmere Throws:

1. Introduction
2. Technical Characteristics
3. Designs
4. Colourways
5. Fringe Details
6. Sizes

### 1. Introduction

Cashmere throws are one of the most luxurious additions to any designer's scheme. They are an important finishing touch in many interiors' projects and a useful, beautiful and tactile addition to your client's lifestyle – something to remember **you** by.

### 2. Technical Characteristics

These sections detail why Cashmere is a better wool than other wools and why a KOTHEA Cashmere Throw is a better Cashmere Throw than other throws.

#### 2.1 100% Cashmere Wool

Cashmere wool is made from the fibres of the undercoat of the cashmere goat (*capra hircus laniger*). The fibres are extremely fine, not exceeding 19 microns. To ensure that the high quality undercoat fibres are used a criterion exists to ensure that 97% of the fibres are below 30 microns.

Various grades of cashmere exist. Specify Grade A.

Cashmere wool thus feels 'fine', is lightweight and provides good insulating properties without the weight typified by other wools for the same degree of warmth.

No other *commercially available* wool offers as high a level of quality as cashmere.

So to ensure the best quality Cashmere Throw it is important to specify Grade A, 100% Cashmere Wool – neither a blend nor any other wool is as good.



# K O T H E A

## 2.2 Ply

Wool is made from at least 2 strands twisted together. A higher ply would have 4, 6, 8, 10 or more strands twisted together. A higher ply gives the resultant throw a much thicker and much more luxurious feel.

A higher ply is more expensive than a lower ply as more of the cashmere wool is used. The higher ply throw is heavier and will hang differently to a much lighter 2-ply alternative.

Typically a 2 ply throw is suitable really only for apparel and usually scarves.

As a designer you have to make a judgement call on the thickness and cost of the product you specify. A 10-ply throw is not inherently better quality wool or better suited to being a throw than is an 8-ply throw. But its thickness, its feel and how it hangs will all be different.

It is sometimes not practical to weave certain designs from thicker 10-ply wool and sometimes also 8-ply wool. This is why you will sometimes see certain of our designs not available in higher ply cashmere.



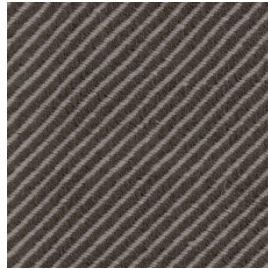
# KOTHEA

## 3. Designs

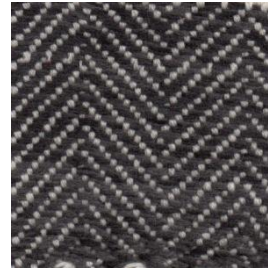
12 classic designs are available.



Wattle



Arica Trellis



Vence Cashmere



Vespa Herringbone



ZigZag



Dune



Bumblebee



Wicker



Mosaic



Horsetail



Double Diamond



Checkerboard



# KOTHEA

## 4. Colourways

KOTHEA carefully specifies colour palettes to match both our classic weaves and colour 'trends' in the top market. Our colourways span 'classic extended neutrals'.



Tea



Malt



Fennel



Green Tea



Assam



Spice



Ginger



Mocha



Robusta



Espresso



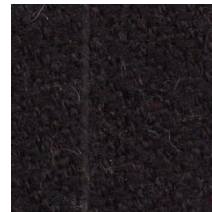
Earth



Cappuccino



Graphite



Night



Black



Lead



Cement



Aluminium



Gun Metal



Charcoal

# KOTHEA



White



Off White



Fizz



Pink Champagne



Rosé



Lipstick



Redcurrant



Ruby



Cabernet



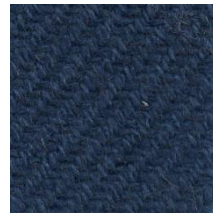
Raspberry



Blackcurrant



Châteauneuf



Midnight



Stormy



Sea Storm

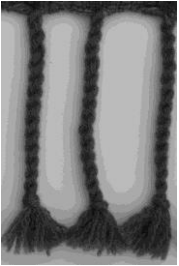


Powder

# K O T H E A

## 5. Fringe Details

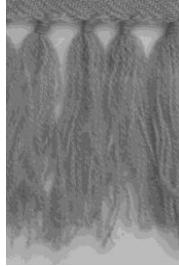
Greyscale images shown.



Twisted Fringe



Short Fringe



Standard Fringe

## 6. Sizes

Standard throw sizes are 125 x 180cm and 150 x 225cm.

Custom sizes are available subject to minimum order quantities and a maximum width of 225cm.

## 7. Sampling

You can request sampling or prices by telephoning or completing the information at the following clickable link: <http://blog.kothea.com/kothea-luxury-cashmere-throws-prices-samples>. A short version and scannable version of the same link are shown below for your convenience.

<http://bit.ly/A8XAL7>

