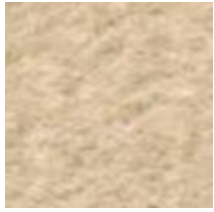


KOTHEA

MOHAIR VELVET COLLECTION 4

Colour Chart



Brulee



Horseradish



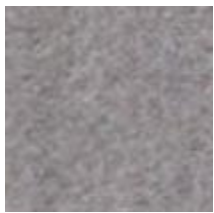
Biscuit



Mocha



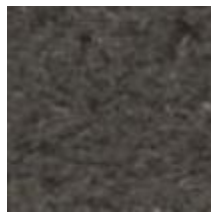
Cicely



Loco



Grain of Selim



Caraway



Poppy Seed



Kemp



Silverbell



Applemint



Peppermint



Blue Raspberry



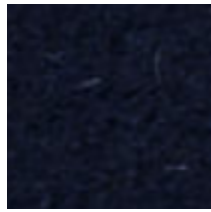
Winterfrost



Crayfish



Hackberry



Mussel Shell



Blueberry



Plum

Options

4 Mohair Velvet Collections, Many Velvet Collections
140cm Wide, 35+ Colourways

100% Mohair Pile, 100% Cotton Base
Wyzenbeek 80,000 Double Rubs, BS5852 (Crib 5)

Colour Chart

KOTHEA Limited
e: info@kothea.com
t: +44 (0)20 8943 4904
w: www.kothea.com

KOTHEA

MOHAIR VELVET COLLECTION 4



Pistachio



Marzipan



Ginger Snap



Caramel



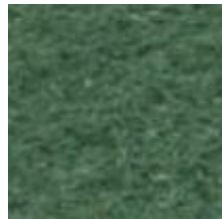
Date



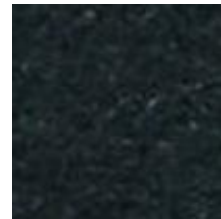
Olive



Sage



Chilli



Sorrel



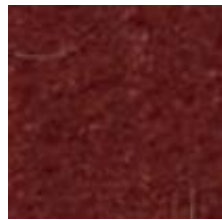
Soya Sauce



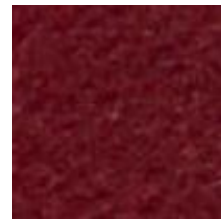
Goji



Strawberry



Paprika



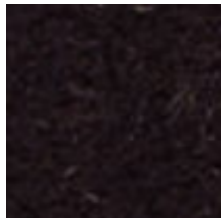
Rose Water



Fig Jam



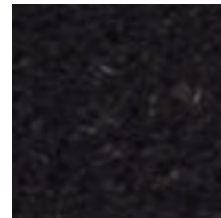
Mush Yellow



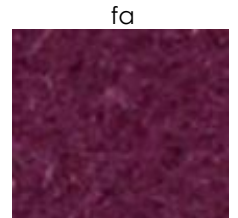
Sloe



Espresso



Liquorice



Borscht

Options

4 Mohair Velvet Collections, Many Velvet Collections
140cm Wide, 35+ Colourways

100% Mohair Pile, 100% Cotton Base
Wyzenbeek 80,000 Double Rubs, BS5852 (Crib 5)